

# Maps of the Inside of Evacuation Shelters

# 避難所内マップ

Kumano Chomin Hall (P2)

(English Ver.)

Kumano West Disaster Prevention Center (P5)

Kumano East Disaster Prevention Center (P7)

**NEW**

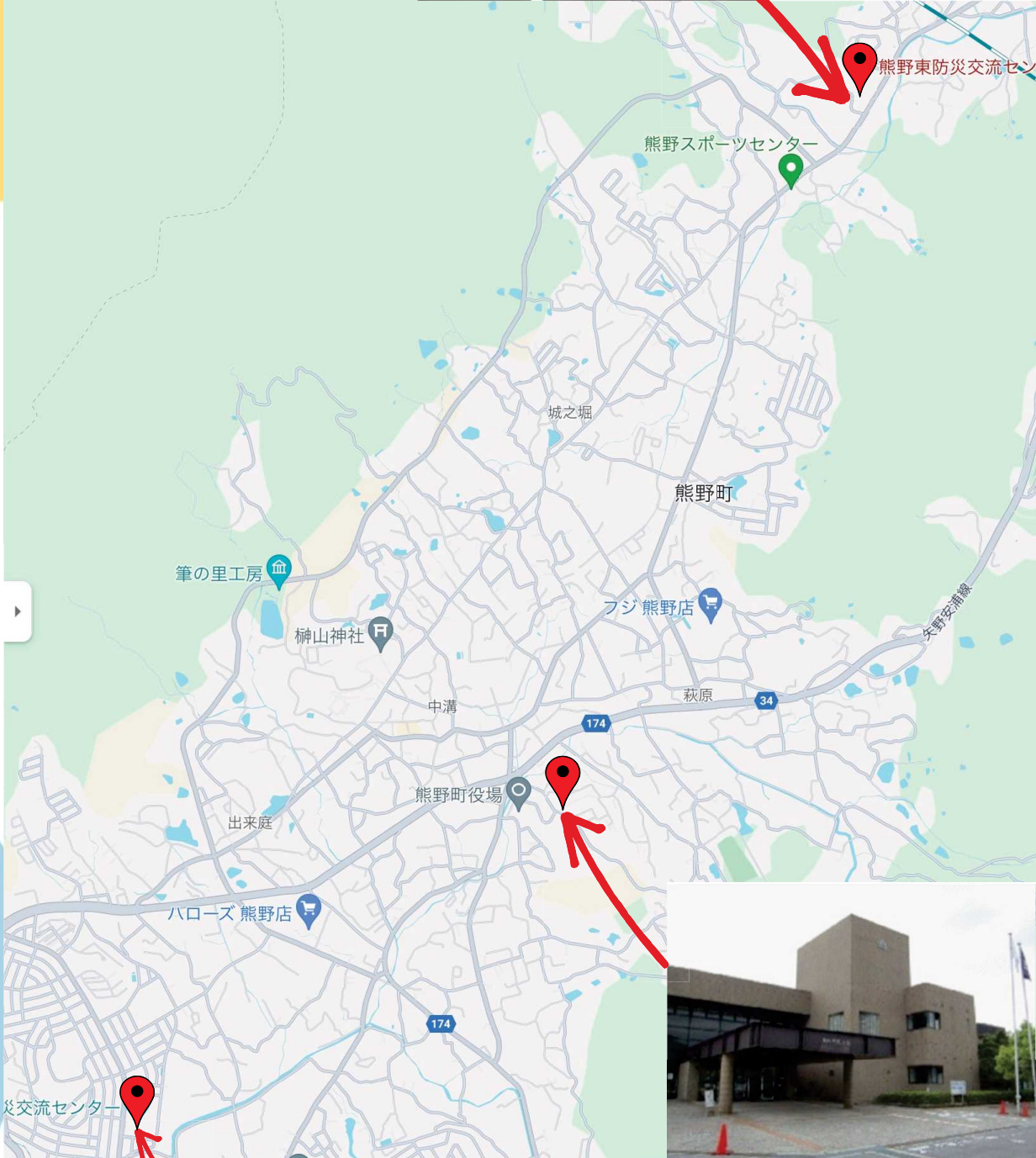
# 2024 Edition

A Kumano High School student explains  
how to make it easier for everyone to escape!!



Places you usually don't see!  
Places you don't understand!  
Everything you need to know!  
We have put together a detailed list!

# Kumano East Disaster Prevention Center[P7]



Kumano Chomin Hall[P2]



Kumano West Disaster Prevention Center[P5]

# 《Introduction》

## To reduce casualties from disasters

In 2018, Western Japan had heavy rains, causing many casualties in Kumano town. In order to reduce the number of victims, I would like people to know more about the evacuation facilities they can use.

This map introduces the inside of evacuation shelters built by Kumano Town after the disaster.

Please give it a read!

Author



Hiroshima Prefectural  
Kumano High School  
Admission in 2023  
Mako Nishimura



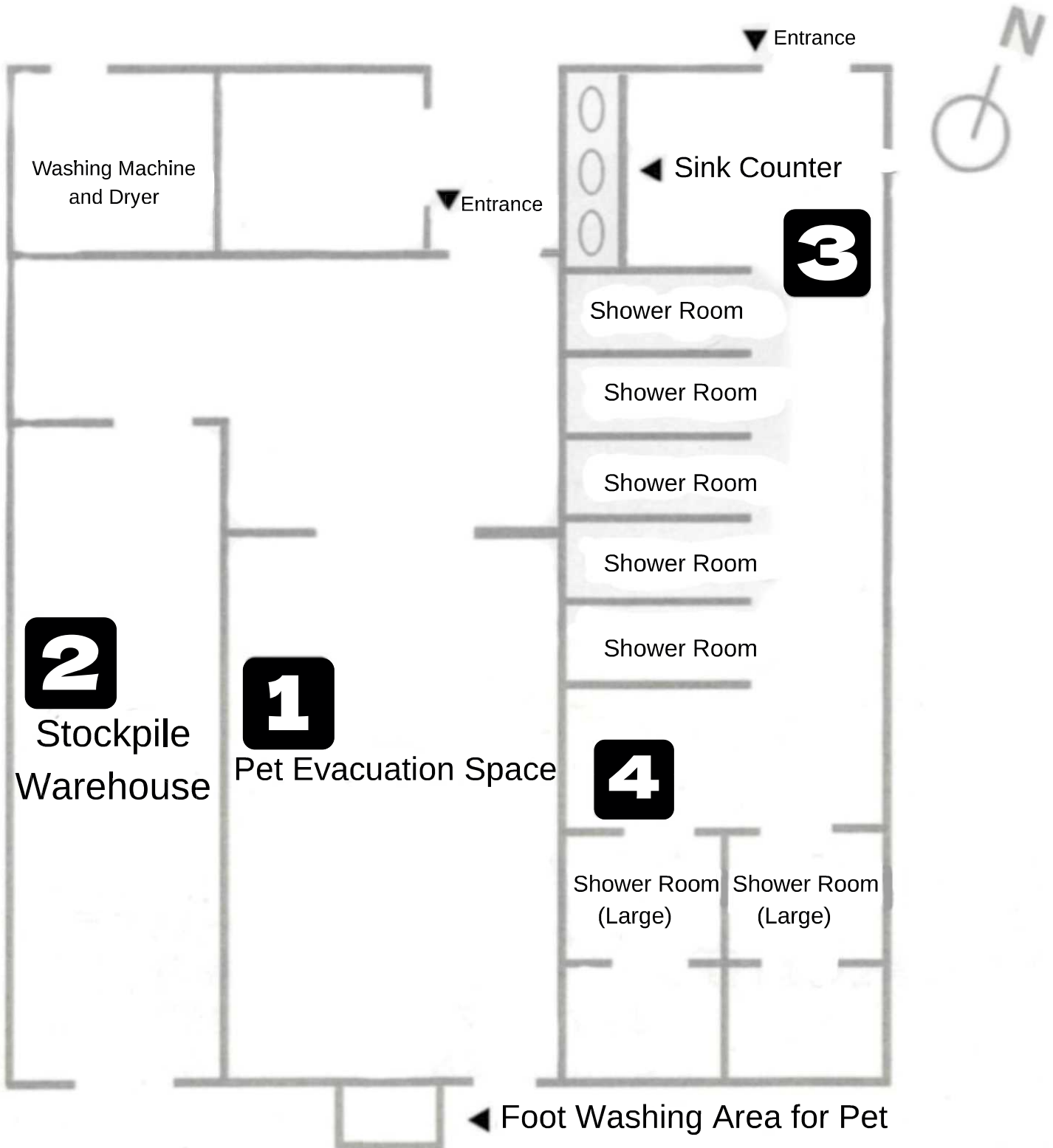
# Kumano Chomin Hall



1-11-2, Nakamizo, Kumano-cho,  
Akigun, Hiroshima



082-854-3111



# 1 Pet Evacuation Space



This is an evacuation space for pets only. 20 dogs and 10 cats can enter.



Pet evacuation practice occurs once a year.

# 2 Stockpile Warehouse



This is a place for food and baby food which takes into account some people having allergies. This picture is baby food. In consideration of good hygiene, it is packaged so there is no need to touch it directly.

### **3** Shower Rooms



There are seven shower rooms for long stays. There is also a washroom next to them.



### **4** Big Shower Rooms

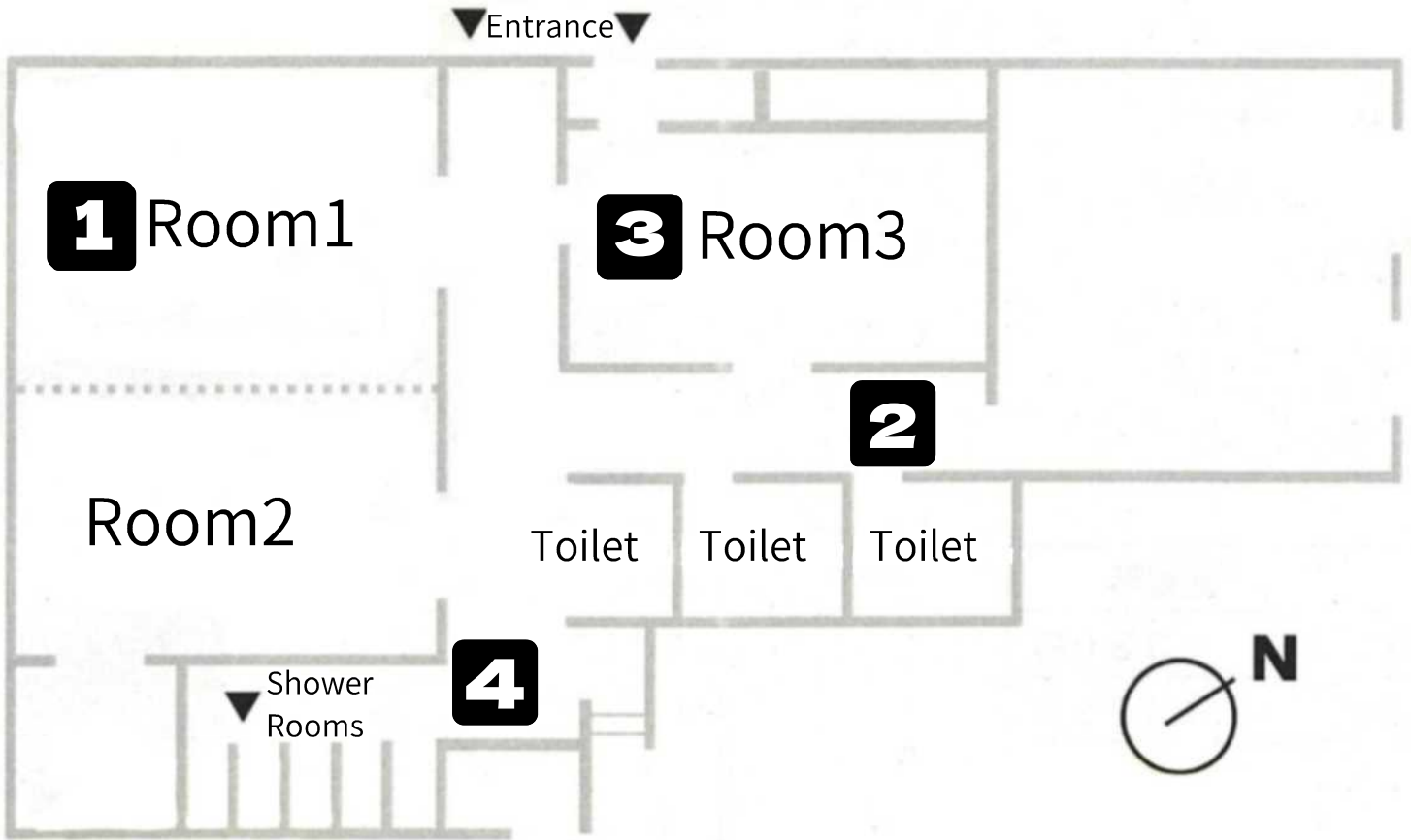


There are two shower rooms available for wheelchair users.

# Kumano West Disaster Prevention Center



 15-4, Kanda, Kumano-cho, Akigun, Hiroshima  
 082-854-1673



## **1** Room1 • 2



These are usually places for local people to interact with each other.

In the event of a disaster, they serve as evacuation spaces.

## 2 Toilet



In an emergency, you can change the men's toilet to a women's toilet.

## 3 Room3



Normally, it can be used as an exchange room. In the event of a disaster, it can be used as a pet evacuation space.

💡 There are three entrances and exits to make it easy to evacuate.

## 4 Shower Rooms



There are five shower rooms for long stays. Normal use is also possible.

# Kumano East Disaster Prevention Center



3-11-13, Hatsugami, Kumano-cho,  
Akigun, Hiroshima

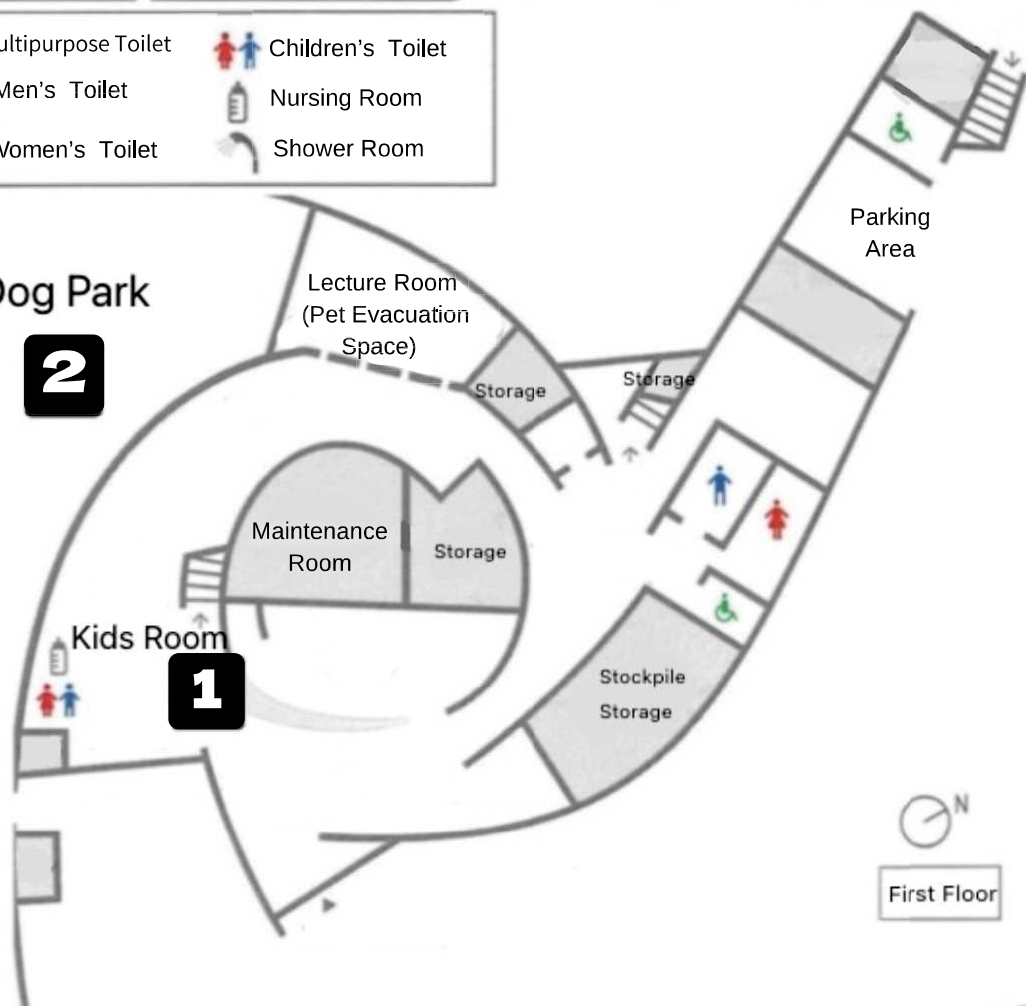


082-854-4138

- |                     |                   |
|---------------------|-------------------|
| Multipurpose Toilet | Children's Toilet |
| Men's Toilet        | Nursing Room      |
| Women's Toilet      | Shower Room       |

Dog Park

**2**



First Floor

**5**

**4**

**3**

**6**



Second Floor

# 1 Kids Room



This is a rest area for babies and children. There is also a toilet for children and a nursing room. It has a large desk and is a place for local people to interact.

# 2 Dog Park



There is also a dog park outside where your dog can play. This is suitable for long-term evacuation. There is also a foot washing area for dogs, so you can play with peace of mind.

# 3 Disaster Prevention Hall



This hall serves as an area for general evacuees in the event of a disaster. There is a Japanese-style room nearby which you can use first if you are not feeling well.



Indirect lighting is used to create a calm atmosphere.

## 4 Kitchen Room



In order to make it easy to use for wheelchair users, one side uses a low counter to accommodate wheelchair users.



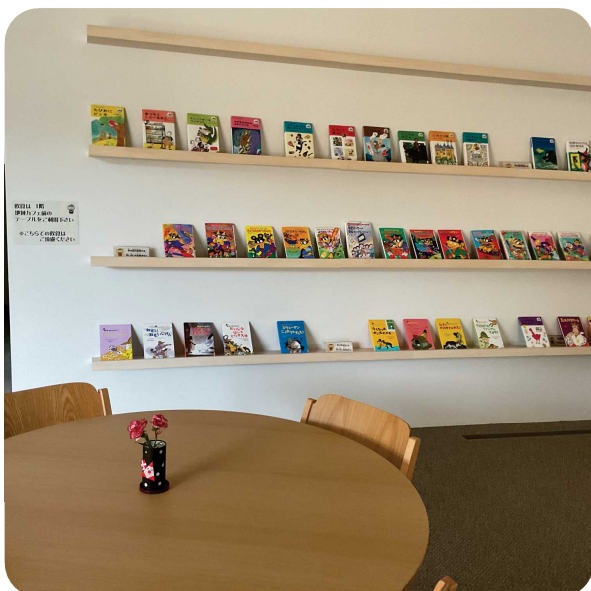
Kumano HS proposed the design of the desk.

## 5 Slope



Even when the elevator becomes unusable, there is a long slope to make it easy for wheelchair users to move.

## 6 Library Corner



There are a lot of books here and it's a free space. It can also be used for studying. There are outlets at the counter and you can use them to connect a PC or smartphone.

# Cooperation

Kumano Chomin Hall

Kumano West Disaster Prevention Center

Kumano East Disaster Prevention Center

Okonomiyaki JYU-JYU

Cosmetic Sono

Kumano Shoten

Wagyu Kondo

# Translations by

Kumano High School ESS

Fukuoka Mana

Hirano Aizen

Hirata China

Matsumoto Rintaro

Nishimura Mako